

**ECO**<sup>TM</sup> heat transfer  
coolers

---



# MULTI-REFRIGERANT UNIT COOLERS



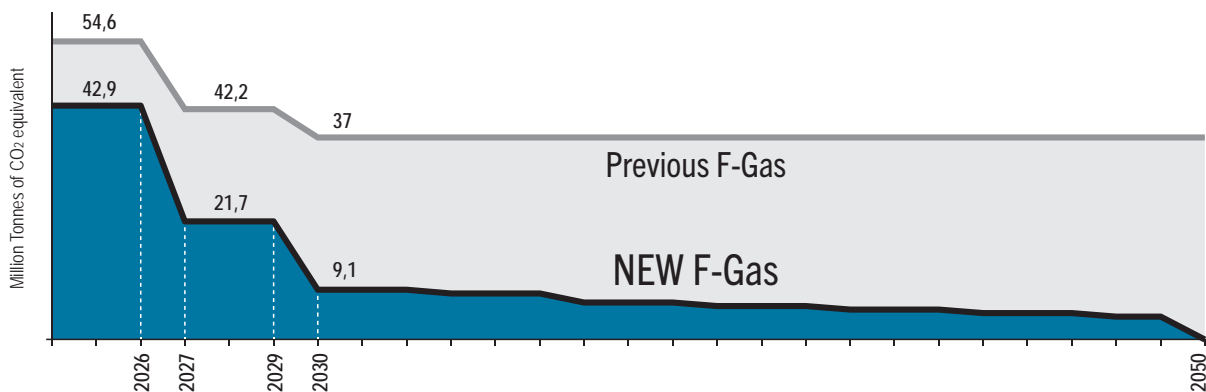
*Engineering a Cleaner, Healthier World*

# MULTI-REFRIGERANT UNIT COOLERS

## ENGINEERED FOR A1 & A2L SYSTEMS



### HFC phase down



To address climate change, the European Commission has launched a new action plan promoting a more sustainable and efficient economy.

Among the measures, the F-gas Regulation (EU 2024/573) drives the phase-out of high-GWP HFC refrigerants in all major sectors, including refrigeration.

Modine is fully aligned with this transition, investing in new technologies and developing innovative products.

A key example is the adoption of low-GWP A2L refrigerants, which offer strong environmental benefits but must be handled responsibly due to their mild flammability.

To ensure safe and flexible use, we have created a range of **MULTI-REFRIGERANT** unit coolers designed to operate with both traditional A1 HFCs and new A2L gases.

This approach helps manufacturers and distributors simplify inventory, reduce stock complexity and rely on a single platform across multiple system configurations.

Our product line is based on our most established unit cooler families and covers a wide variety of applications:

- wall-mounted units for refrigerated cabinets, display cases and small cold rooms;
- cubic coolers for fresh and frozen storage;
- dual-discharge models for low-height rooms or processing areas;
- slanted units that maximize storage space;
- customized solutions for applications requiring reduced air movement.

Thanks to newly engineered heat exchangers featuring optimized geometries and lower internal volume, these units significantly reduce the total refrigerant charge and comply with the latest environmental requirements.

#### Important

The design, construction and operation of refrigeration systems using these units must comply with EN 378.

Safety requirements for both A1 and A2L refrigerants must follow EN 378 and the refrigerant safety data sheets.

Emergency procedures must be carefully planned, such as installing fault-warning systems, to protect both people and property.

#### Wall unit coolers for cabinets and small cold rooms

- Fan motors diameter: 230 mm
- Capacity: from 0,45 to 2,56 kW

AP



#### Cubic unit coolers for commercial cold rooms

- Fan motors diameter: from 250 to 350 mm
- Capacity: from 0,85 to 24,3 kW

ACG



#### Dual discharge unit coolers for work and commercial cold rooms

- Fan motors diameter: from 230 to 350 mm
- Capacity: from 0,48 to 26,3 kW

AGD



#### Slanted unit coolers for cabinets and commercial cold rooms

- Fan motors diameter: from 200 to 315 mm
- Capacity: from 0,3 to 7,6 kW

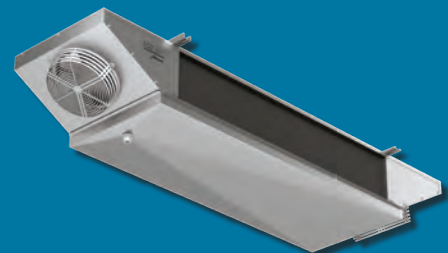
AGS



#### Dual discharge unit coolers for work and cold rooms in which reduced air circulation is required

- Fan motors diameter: 250 or 315 mm
- Capacity: from 2,49 to 7,4 kW

AGL



The logo features the number '50' in a large, bold, gold-colored font, with the word 'YEARS' in a smaller, gold-colored font directly below it. This central text is flanked by two gold-colored laurel wreaths that curve upwards and outwards. Below the wreaths, the words 'OF ECO BRAND' are written in a bold, gold-colored, sans-serif font.

**50**  
YEARS  
**OF ECO BRAND**

The F-Gas regulation is leading us towards the elimination of high GWP refrigerants.

A2L refrigerants are among the new alternatives, but their use requires great responsibility due to their mild flammability.

To utilize their potential safely, we have developed a new range of MULTI-REFRIGERANT unit coolers that benefit from reliable standard components and a dedicated electric defrost system capable of operating at temperatures below the autoignition point of A2L refrigerants.

MREC2602A01\_U

## Modine Manufacturing Company

Modine CIS Italy S.r.l.  
Via Giulio Locatelli, 22  
33050 Pocenia (UD) Italy

©2026 Modine Manufacturing Co.

