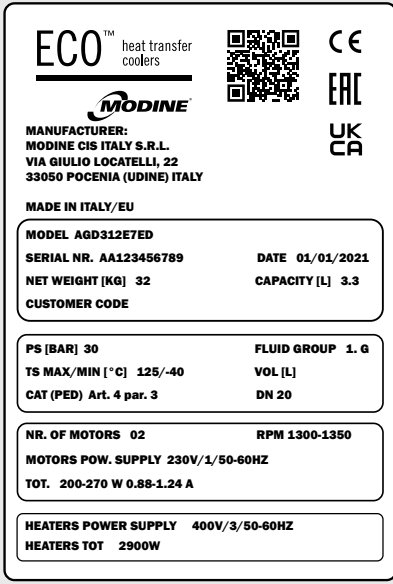
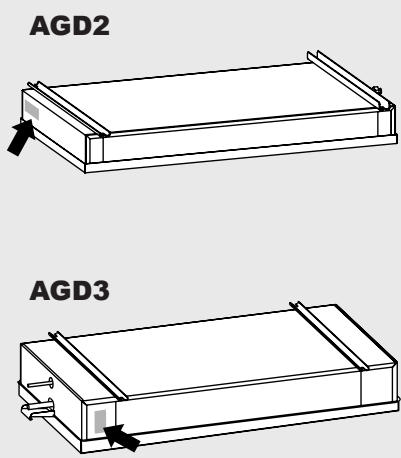


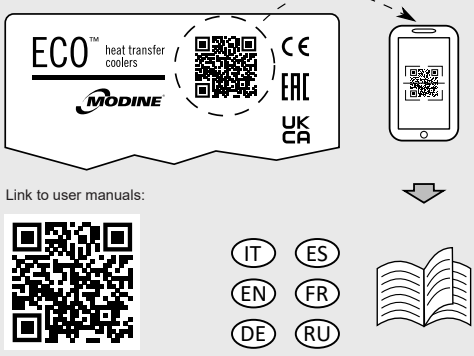
# AGD

# QUICK GUIDE

This document is a concise version of the model manual. This document is not meant to be a replacement of the manual. To download the full manual please scan the QRcode below or locate the data label on the model and scan the QRcode.







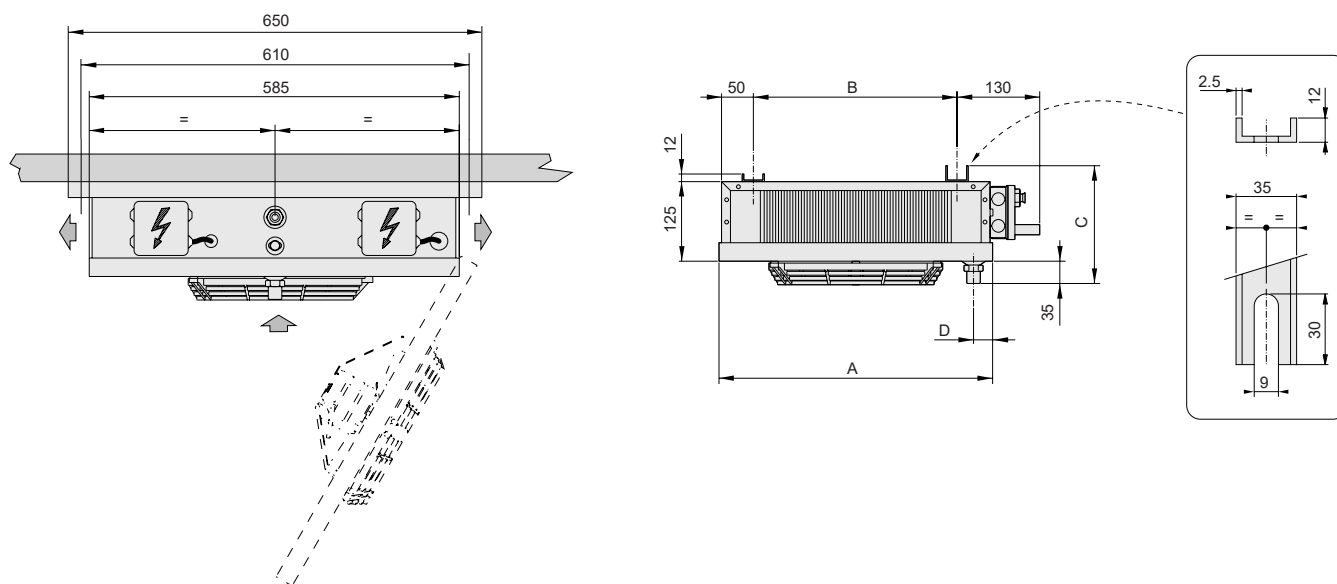
Link to user manuals:

IT ES  
EN FR  
DE RU

**!** Before removing the packaging, handling, assembling, positioning, commissioning of the machine and before performing any work on the model, download and carefully read all the information in the manual. If in doubt contact Modine.

## Construction and dimensional features

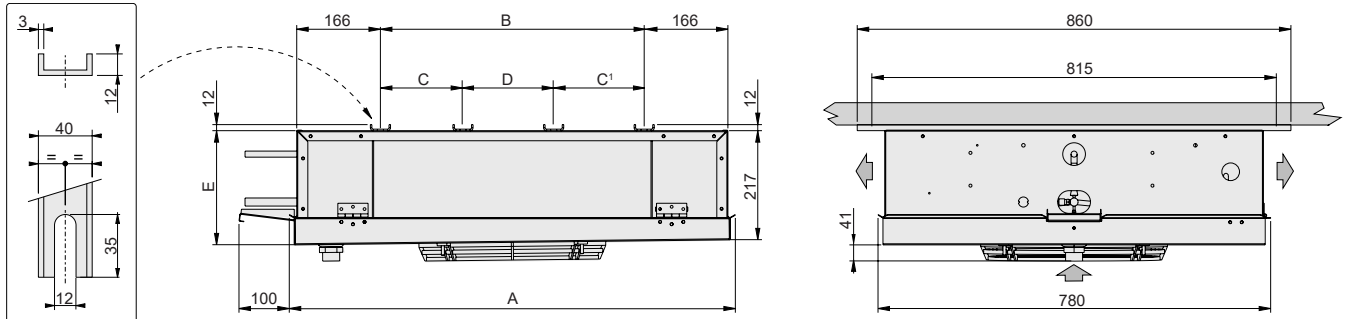
### AGD2 - Ø230 mm fan diameter unit



Model	AGD	21E49R	21E49	21A49	22E49	22A49	23A49	24A49	25A49
Motorfans	n° x Ø mm	1x230	1x230	1x230	2x230	2x230	3x230	4x230	5x230
Dimensions	A	430	430	430	730	730	1030	1330	1630
	B	320	320	320	620	620	920	1220	1520
	C	172	172	172	185	185	185	185	185
	D	30	30	30	30	30	30	35	35
Coil connections	In (SAE)	1/2"	1/2"	1/2"	1/2"	1/2"	1/2"	1/2"	1/2"
	Out (mm)	12	12	16	16	16	22	22	22
Drain connection	Ø (GAS)	1/2"	1/2"	1/2"	1/2"	1/2"	1/2"	1"	1"
Net weight	kg	7.3	7.3	8.0	12.2	13.4	19.0	24.4	29.9

XXXXXX : Thermostatic valve with external pressure equaliser recommended

**AGD3 - Ø315 mm fan diameter unit**

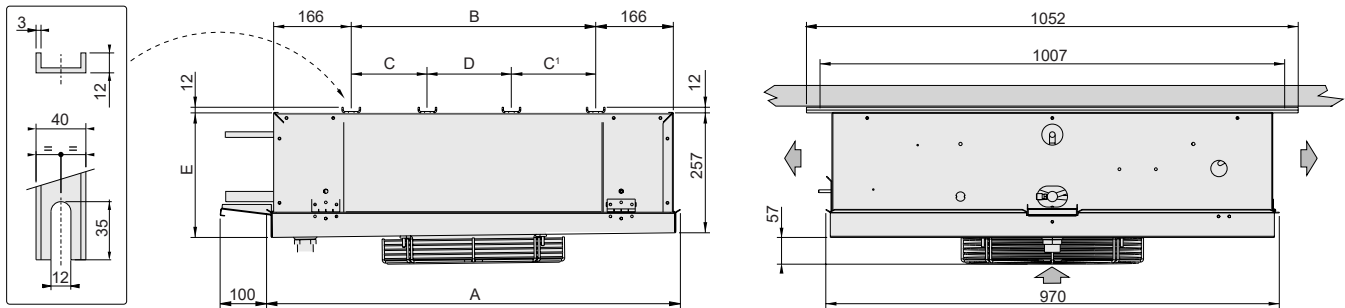


(1) For 5-motor models this C dimension is not foreseen

Model	AGD	<u>311E3</u>	<u>312E3</u>	-	<u>313E3</u>	<u>314E3</u>	<u>315E3</u>	-	<u>316E3</u>	-
		<u>311E4</u>	<u>312E4</u>	-	<u>313E4</u>	<u>314E4</u>	-	<u>315E4</u>	<u>316E4</u>	-
		<u>311E7</u>	-	<u>312E7</u>	<u>313E7</u>	<u>314E7</u>	-	<u>315E7</u>	-	<u>316E7</u>
Fan motors	n° x Ø mm	1x315	2x315	2x315	3x315	4x315	5x315	5x315	6x315	6x315
Dimensions	A	885	1435	1435	1985	2535	3085	3085	3635	3635
	B	524	1074	1074	1624	2174	2724	2724	3274	3274
	C	-	-	-	812	1087	1087	1087	1087	1087
	D	-	-	-	-	-	1637	1637	1100	1100
	E	230	235	235	240	245	250	250	255	255
Coil connections	In (mm)	12	16	12	16	16	22	16	22	16
	Out (mm)	16	22	22	28	28	35	35	35	35
Drain connections	Ø (GAS)	1"	1"	1"	1"	1"	1"	1"	1"	1"
Net weight	kg	20	34	32	53	69	82	78	98	92

XXXXXX : Thermostatic valve with external pressure equaliser recommended

**AGD3 - Ø350 mm fan diameter unit**



(1) For 3 and 5-motor models this C dimension is not foreseen

Model	AGD	<u>351E3</u>	<u>361A3</u>	-	<u>352E3</u>	<u>362A3</u>	<u>353E3</u>	<u>363A3</u>	<u>354E3</u>	<u>364A3</u>
		<u>351E4</u>	-	<u>361A4</u>	<u>352E4</u>	<u>362A4</u>	<u>353E4</u>	<u>363A4</u>	<u>354E4</u>	<u>364A4</u>
		<u>351E7</u>	-	<u>361A7</u>	<u>352E7</u>	<u>362A7</u>	<u>353E7</u>	<u>363A7</u>	<u>354E7</u>	<u>364A7</u>
Fan motors	n° x Ø mm	1x350	1x350	1x350	2x350	2x350	3x350	3x350	4x350	4x350
Dimensions	A	885	885	885	1435	1435	1985	1985	2535	2535
	B	523	523	523	1073	1073	1623	1623	2173	2173
	C	-	-	-	-	-	522	522	1072	1072
	D	-	-	-	-	-	1102	1102	1102	1102
	E	270	270	270	275	275	280	280	285	285
Coil connections	In (mm)	12	16	12	16	16	16	22	22	22
	Out (mm)	22	22	22	28	28	28	35	35	35
Drain connections	Ø (GAS)	1	1	1	1	1	1	1	1	1
Net weight	kg	32	38	38	56	67	80	96	104	124

XXXXXX : Thermostatic valve with external pressure equaliser recommended

**Wiring diagrams**

**Motor-fan connection diagram**

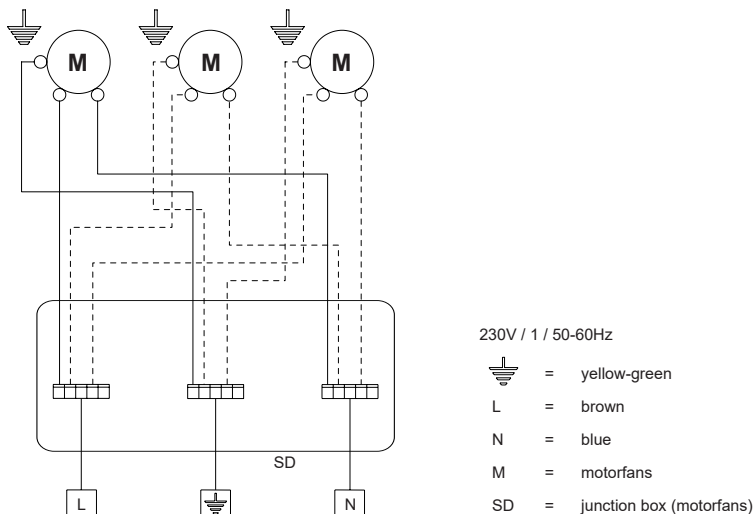
**Important.** The motors are equipped with inner thermal protection with automatic reconnection. Before using motor speed control systems verify the compatibility with the motors. Non compatible systems may damage motors or increase noise level; Modine will not be responsible for model performance with speed control systems. For fans equipped with thermal contacts (TK), these must be connected to the control circuit. For models supplied with wiring in a junction box, remove the cover to make the connection.

Model	AGD	21E49R 21E49 21A49	22E49 22A49 -	23A49 -	24A49 -	25A49 -
Fan motors	n° x Ø mm	1x230	2x230	3x230	4x230	5x230
Frequency	Hz	50   60	50   60	50   60	50   60	50   60
Electrical consumption	A	0.35	0.70	1.05	1.40	1.75
	W	53	106	159	212	265
RPM		1300	1300	1300	1300	1300

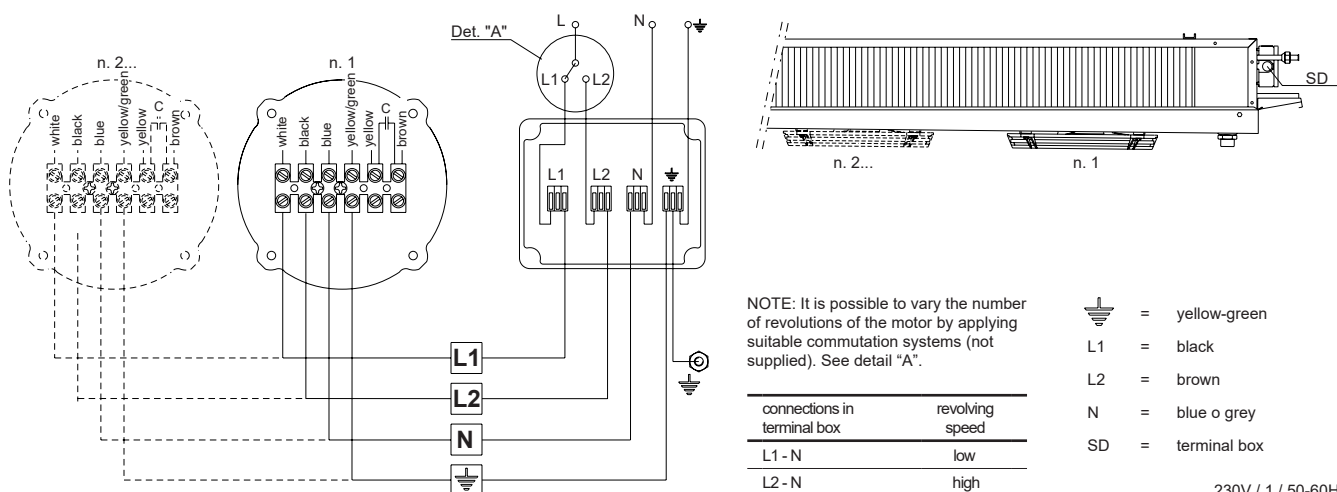
Model	AGD	311E3 311E4 311E7	312E3 312E4 312E7	313E3 313E4 313E7	314E3 314E4 314E7	315E3 315E4 315E7	316E3 316E4 316E7						
Fan motors	n° x Ø mm	1x315	2x315	3x315	4x315	5x315	6x315						
Frequency	Hz	50   60	50   60	50   60	50   60	50   60	50   60						
Electrical consumption	A	0.38   0.45	0.76   0.90	1.14   1.35	1.52   1.80	1.90   2.25	2.28   2.70						
	W	85   100	170   200	255   300	340   400	425   500	510   600						
RPM		1170   940	1170   940	1170   940	1170   940	1170   940	1170   940						
Connections in terminal box L2 - N													
Electrical consumption	A	0.44	0.62	0.88	1.24	1.32	1.86	1.76	2.48	2.20	3.10	2.64	3.72
	W	100	135	200	270	300	405	400	540	500	675	600	810
RPM		1300	1350	1300	1350	1300	1350	1300	1350	1300	1350	1300	1350

Model	AGD	351E3 351E4 351E7	352E3 352E4 352E7	353E3 353E4 353E7	354E3 354E4 354E7	361A3 361A4 361A7	362A3 362A4 362A7	363A3 363A4 363A7	364A3 364A4 364A7
Fan motors	n° x Ø mm	1x350	2x350	3x350	4x350	1x350	2x350	3x350	4x350
Frequency	Hz	50   60	50   60	50   60	50   60	50   60	50   60	50   60	50   60
Electrical consumption	A	0.31   0.37	0.62   0.74	0.93   1.11	1.24   1.48	0.68   0.90	1.36   1.80	2.04   2.70	2.72   3.60
	W	65   85	130   170	195   255	260   340	145   205	290   410	435   615	580   820
RPM		945   1100	945   1100	945   1100	945   1100	1450   1700	1450   1700	1450   1700	1450   1700

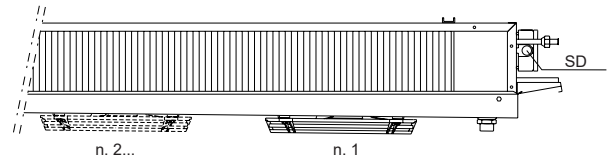
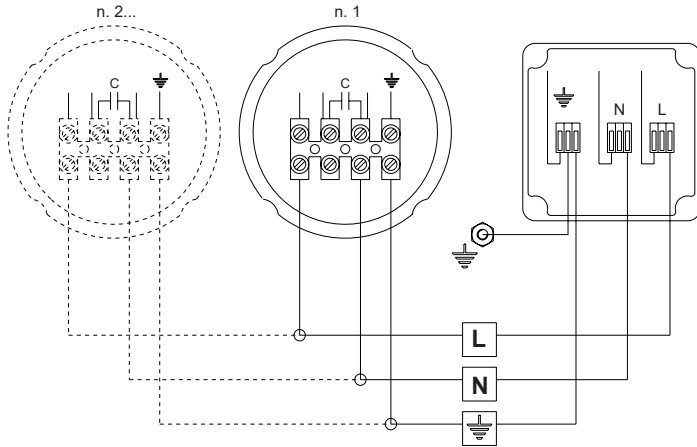
### AGD2 - Ø230 mm fan diameter unit



### AGD3 - Ø315 mm fan diameter unit



AGD3 - Ø350 mm fan diameter unit

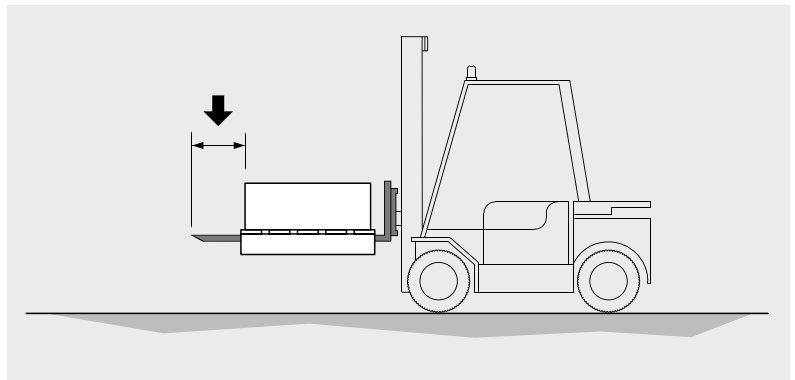


- = yellow-green
- L = brown
- N = blue or grey
- SD = terminal box

230 - 240V / 1 / 50-60Hz

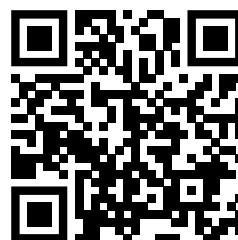
## Handling and installation

- 1.1 The models are supplied in a cardboard box and/or wooden cage.
- 1.2 The packaged model must be moved by qualified personnel using a forklift truck of suitable capacity, or with crane and/or overhead crane. The lifting brackets must be longer than the depth of the packaging and/or of the model. Avoid any abrupt movement and do not stand close to the manoeuvring area. Always ensure that the models are secured to the hoists before handling operations. A heavy impact or a strong thrust can overturn the model.
- 1.3 The model must always be kept in position as indicated on the packaging.
- 1.4 Avoid applying improper pressure to the packaging during handling. Take care not to damage the headers.
- 1.5 Unpack the unit close to the installation site.
- 1.6 Always use PPE (Personal Protection Equipment) during handling and installation, e.g. gloves that are sufficiently resistant to mechanical hazards, to reduce the risk of injury in the event of contact with sharp sheet metal edges or the finned pack.
- 1.7 It is essential to take all the necessary measures to ensure the complete safety of the operators in order to prevent the model from accidentally falling against people. It is forbidden to work under a suspended load. It is advisable to prepare a structure of greater capacity than the weight to be supported (trestle or props) on which to place the model.
- 1.8 When installation is complete, remove the protective film covering the model.
- 1.9 When installation is complete, dispose of packaging according to local regulations.
- 1.10 If brackets are provided, install and maintain them for future use.



Modine CIS Italy S.r.l.  
 33050 Pocenia - Udine - Italy  
 Via Giulio Locatelli, 22  
 Tel. +39 0432.772.001  
 Fax +39 0432.779.594  
 www.modine.com

Link to user manuals:



<https://www.modinecoolers.com/documents/>