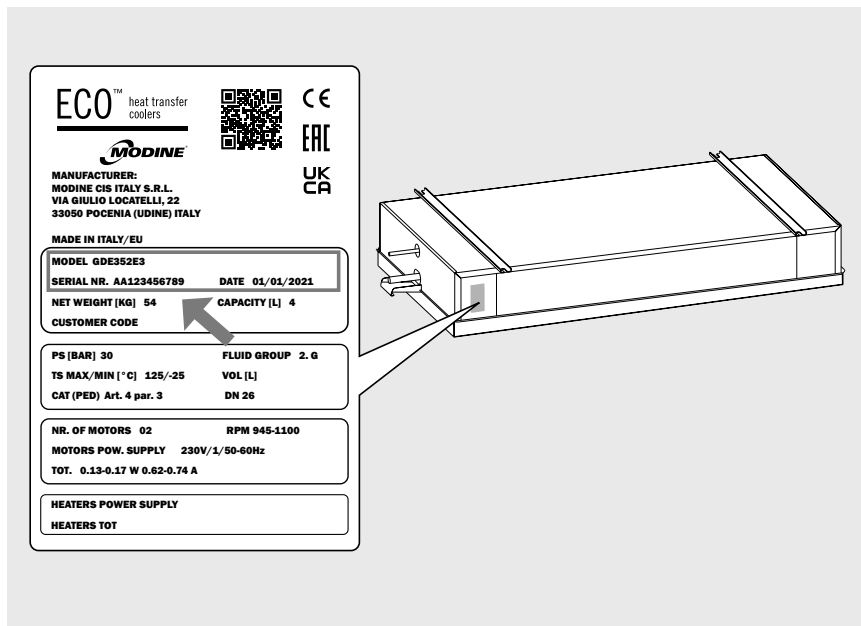


GDE

QUICK GUIDE

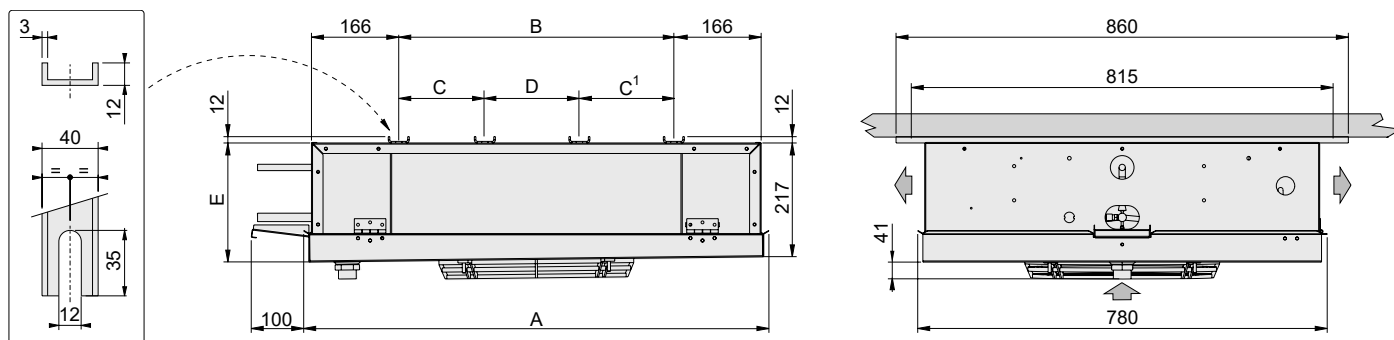
This document is a concise version of the model manual. This document is not meant to be a replacement of the manual. To download the full manual please scan the QRcode below or locate the data label on the model and scan the QRcode.



! Before removing the packaging, handling, assembling, positioning, commissioning of the machine and before performing any work on the model, download and carefully read all the information in the manual. If in doubt contact Modine.

Construction and dimensional features

Ø315 fan diameter unit

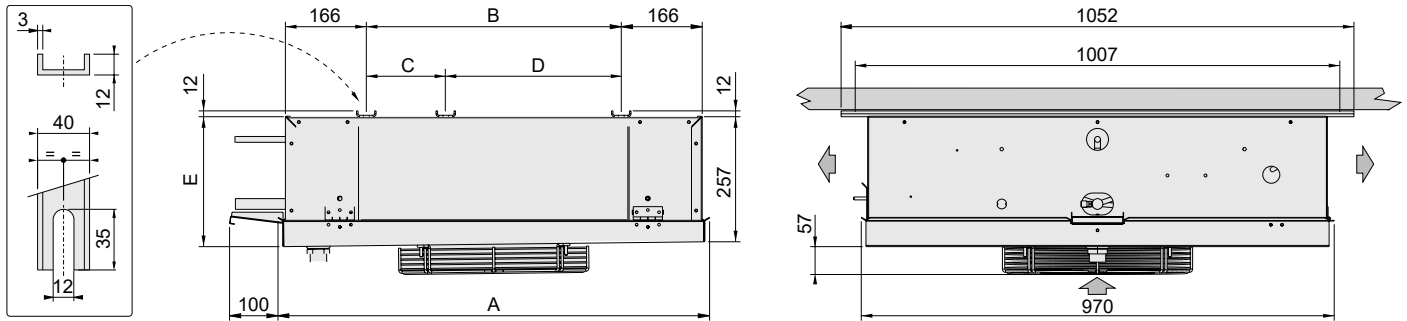


(1) 5-engine models do not have this dimension C

Thermostatic valve with external pressure equaliser recommended

Model	GDE	311E3	312E3	-	313E3	314E3	315E3	-	316E3	-
		311E4	312E4	-	313E4	314E4	-	315E4	316E4	-
		311E7	-	312E7	313E7	314E7	-	315E7	-	316E7
Motorfans	n° x Ø mm	1x315	2x315	2x315	3x315	4x315	5x315	5x315	6x315	6x315
Dimensions	A	885	1435	1435	1985	2535	3085	3085	3635	3635
	B	524	1074	1074	1624	2174	2724	2724	3274	3274
	C	-	-	-	812	1087	1087	1087	1087	1087
	D	-	-	-	-	-	1637	1637	1100	1100
	E	230	235	235	240	245	250	250	255	255
Coil connections	In (mm)	12	16	12	16	16	22	16	22	16
	Out (mm)	16	22	22	28	28	35	35	35	35
Drain connection	Ø (GAS)	1"	1"	1"	1"	1"	1"	1"	1"	1"
Net weight	kg	20	34	32	50	65	78	78	93	86

Ø350 fan diameter unit



Thermostatic valve with external pressure equaliser recommended

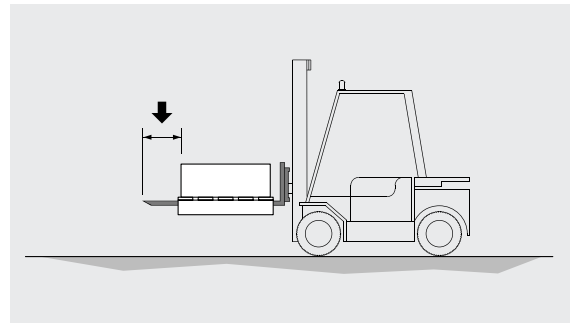
Model	GDE	351E3	361A3	-	352E3	362A3	353E3	363A3	354E3	364A3	355F3	365F3
		351E4	-	361A4	352E4	362A4	353E4	363A4	354E4	364A4	355F4	365F4
		351E7	-	361A7	352E7	362A7	353E7	363A7	354E7	364A7	355F7	365F7
Motorfans	n° x Ø mm	1x350	1x350	1x350	2x350	2x350	3x350	3x350	4x350	4x350	5X350	5X350
Dimensions	A	885	885	885	1435	1435	1985	1985	2535	2535	3085	3085
	B	523	523	523	1073	1073	1623	1623	2173	2173	2723	2723
	C	-	-	-	-	-	522	522	1072	1072	1072	1072
	D	-	-	-	-	-	1102	1102	1102	1102	1652	1652
	E	270	270	270	275	275	280	280	285	285	290	290
Coil connections	In (mm)	12	16	12	16	16	16	22	22	22	22	22
	Out (mm)	22	22	22	28	28	28	35	35	35	42	42
Drain connection	Ø (GAS)	1	1	1	1	1	1	1	1	1	1	1
Net weight	kg	31	36	36	54	63	77	90	99	117	132	136

Inspection - Storage









- 1.1 Upon receipt of the model immediately check its state of integrity; immediately dispute with the transport company any damage. The packaging is created according to the model, to the suitable means of transport and of handling.
- 1.2 The model must be stored in its original packaging in a place that is protected and away from weathering.
- 1.3 Do not place any other material on top of the packaging.
- 1.4 If the model is allowed to be stacked, follow the instructions on the packaging.
- 1.5 If a motor fan is switched OFF for a long period of time, it must be switched ON for at least 2 hours every month to remove any traces of condensation that may have formed inside the motor.
- 1.6 The following rules apply when the unit must remain in storage for long periods of time. The unit must be stored indoors and positioned according to the instructions on the package. During storage, the fans must be manually rotated at least once every 3 months.

Handling and installation

- 1.1 The models are supplied in a cardboard box and/or wooden cage.
- 1.2 The packaged model must be moved by qualified personnel using a forklift truck of suitable capacity, or with crane and/or overhead crane. The lifting brackets must be longer than the depth of the packaging and/or of the model. Avoid any abrupt movement and do not stand close to the manoeuvring area. Always ensure that the models are secured to the hoists before handling operations. A heavy impact or a strong thrust can overturn the model.
- 1.3 The model must always be kept in position as indicated on the packaging.
- 1.4 Avoid applying improper pressure to the packaging during handling. Take care not to damage the headers.
- 1.5 Unpack the unit close to the installation site.
- 1.6 Always use PPE (Personal Protection Equipment) during handling and installation, e.g. gloves that are sufficiently resistant to mechanical hazards, to reduce the risk of injury in the event of contact with sharp sheet metal edges or the finned pack.
- 1.7 It is essential to take all the necessary measures to ensure the complete safety of the operators in order to prevent the model from accidentally falling against people. It is forbidden to work under a suspended load. It is advisable to prepare a structure of greater capacity than the weight to be supported (trestle or props) on which to place the model.



- 1.8 When installation is complete, remove the protective film covering the model.
- 1.9 When installation is complete, dispose of packaging according to local regulations.
- 1.10 If brackets are provided, install and maintain them for future use.
- 1.11 The following table summarises the PPE (Personal Protection Equipment) to be used during the various phases of the life of the equipment (each stage involves the obligation to use and provide PPE), in order to protect the health and safety of operators.
- 1.12 The responsibility for the identification and choice of the type and category of PPE that is appropriate and suitable lies with the user.
- 1.13 The PPE used must comply with the directives of the product and bear the CE marking (for the European market).

Phase								
	Protective clothing	Safety footwear	Gloves	Goggles	Visor	Ear protectors	Mask	Helmet or head gear
Transportation	NP	NP	NP	NP	NP	NP	NP	NP
Handling	X	X	X	X	NP	NP	NP	X
Unpacking	X	X	X	X	NP	NP	NP	X
Assembly	X	X	X	X	NP	O	NP	X
Ordinary use	NP	NP	NP	NP	NP	NP	NP	NP
Adjustments	X	X	X	NP	X	O	NP	NP
Cleaning	X	X	X	NP	X	O	X	NP
Maintenance	X	X	X	NP	X	O	O	X
Dismantling	X	X	X	NP	X	O	NP	X
Demolition	X	X	X	X	NP	O	NP	O

X : Recommended PPE

O : PPE available or to be used if necessary

NP : PPE not recommended

Wiring diagrams

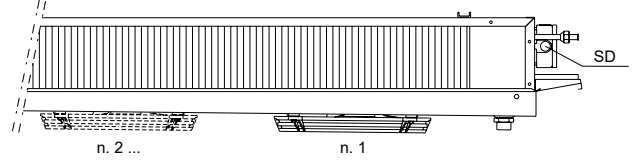
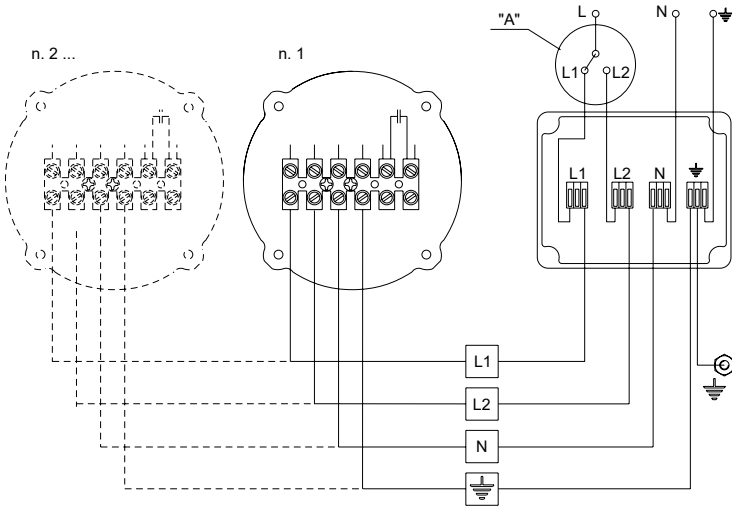
Motor-fan connection diagram

Important. The motors are equipped with inner thermal protection with automatic reconnection. Before using motor speed control systems verify the compatibility with the motors. Non compatible systems may damage motors or increase noise level; Modine will not be responsible for model performance with speed control systems. For fans equipped with thermal contacts (TK), these must be connected to the control circuit. For models supplied with wiring in a junction box, remove the cover to make the connection.

Model	GDE	311E3		312E3		313E3		314E3		315E3		316E3	
		311E4	311E7	312E4	312E7	313E4	313E7	314E4	314E7	315E4	315E7	316E4	316E7
Motorfans	n° x Ø mm	1x315		2x315		3x315		4x315		5x315		6x315	
Frequency	Hz	50	60	50	60	50	60	50	60	50	60	50	60
Junction box connections L1 - N													
Electrical consumption	A	0.38	0.45	0.76	0.90	1.14	1.35	1.52	1.80	1.90	2.25	2.28	2.70
	W	85	100	170	200	255	300	340	400	425	500	510	600
RPM		1170	940	1170	940	1170	940	1170	940	1170	940	1170	940
Junction box connections L2 - N													
Electrical consumption	A	0.44	0.62	0.88	1.24	1.32	1.86	1.76	2.48	2.20	3.10	2.64	3.72
	W	100	135	200	270	300	405	400	540	500	675	600	810
RPM		1300	1350	1300	1350	1300	1350	1300	1350	1300	1350	1300	1350

Model	GDE	351E3		352E3		353E3		354E3		355F3		361A3		362A3		363A3		364A3		365F3	
		351E4	351E7	352E4	352E7	353E4	353E7	354E4	354E7	355F4	355F7	361A4	361A7	362A4	362A7	363A4	363A7	364A4	364A7	365F4	365F7
Motorfans	n° x Ø mm	1x350		2x350		3x350		4x350		5x350		1x350		2x350		3x350		4x350		5x350	
Frequency	Hz	50	60	50	60	50	60	50	60	50	60	50	60	50	60	50	60	50	60	50	60
Electrical consumption	A	0.31	0.37	0.62	0.74	0.93	1.11	1.24	1.48	1.55	1.85	0.68	0.90	1.36	1.80	2.04	2.70	2.72	3.60	3.40	4.50
	W	65	85	130	170	195	255	260	340	325	425	145	205	290	410	435	615	580	820	725	1025
RPM		945	1100	945	1100	945	1100	945	1100	945	1100	1450	1700	1450	1700	1450	1700	1450	1700	1450	1700

Ø315 fan diameter unit



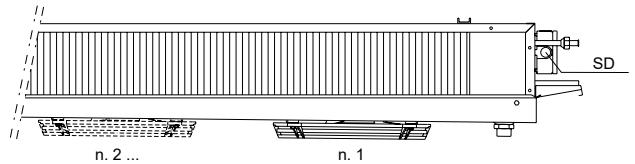
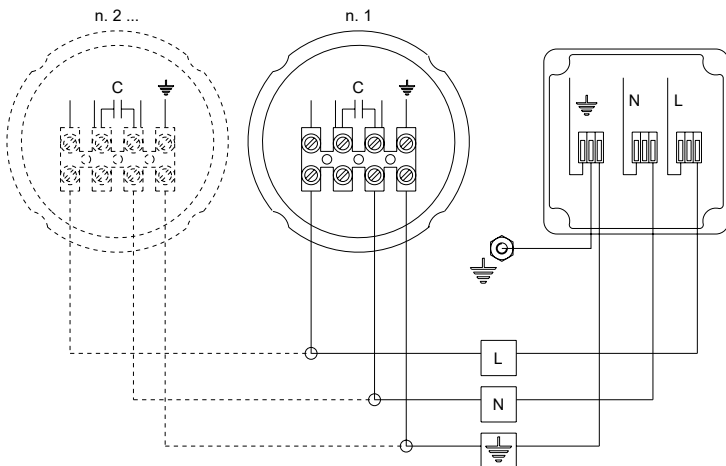
junction box connections	revolving speed
L1 - N	low
L2 - N	high

230V / 1 / 50-60Hz

- = yellow-green
- L1 = black
- L2 = brown
- N = blue or grey
- SD = junction box

NOTE: It is possible to vary the number of revolutions of the motor by applying suitable commutation systems (not supplied). See detail "A".

Ø350 fan diameter unit



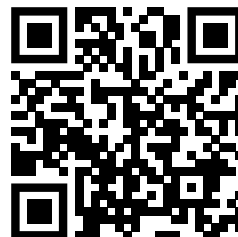
- = yellow-green
- L = brown
- N = blue or grey
- SD = junction box

230-240V / 1 / 50-60Hz



Modine CIS Italy S.r.l.
 33050 Pocenia - Udine - Italy
 Via Giulio Locatelli, 22
 Tel. +39 0432.772.001
 Fax +39 0432.779.594
 www.modine.com

Link to user manuals:



<https://www.modinecoolers.com/documents/>