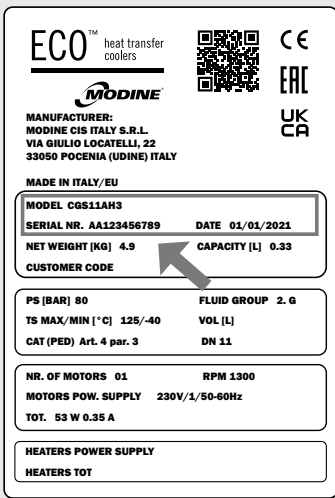


CGS

QUICK GUIDE

This document is a concise version of the model manual. This document is not meant to be a replacement of the manual. To download the full manual please scan the QRcode below or locate the data label on the model and scan the QRcode.



ECO™ heat transfer coolers
MODINE

MANUFACTURER:
MODINE CIS ITALY S.R.L.
VIA GIULIO LOCATELLI, 22
33050 POCENIA (UDINE) ITALY

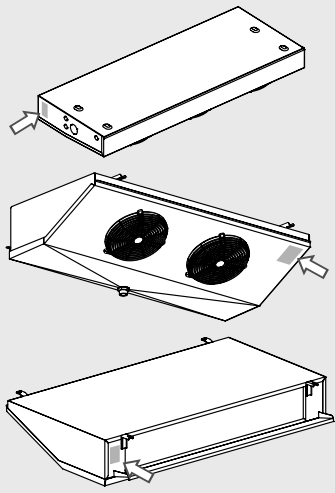
MADE IN ITALY/EU

MODEL CGS11AH3
SERIAL NR. AA123456789 DATE 01/01/2021
NET WEIGHT [KG] 4.9 CAPACITY [L] 0.33
CUSTOMER CODE

PS [BAR] 80 FLUID GROUP 2. G
TS MAX/MIN [°C] 125/-40 VOL [L]
CAT (PED) Art. 4 par. 3 DN 11

NR. OF MOTORS 01 RPM 1300
MOTORS POW. SUPPLY 230V/1/50-60Hz
TOT. 53 W 0.35 A

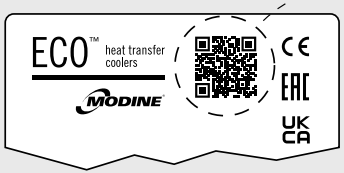
HEATERS POWER SUPPLY
HEATERS TOT




CGS1

CGS2


CGS3



Link to user manuals:



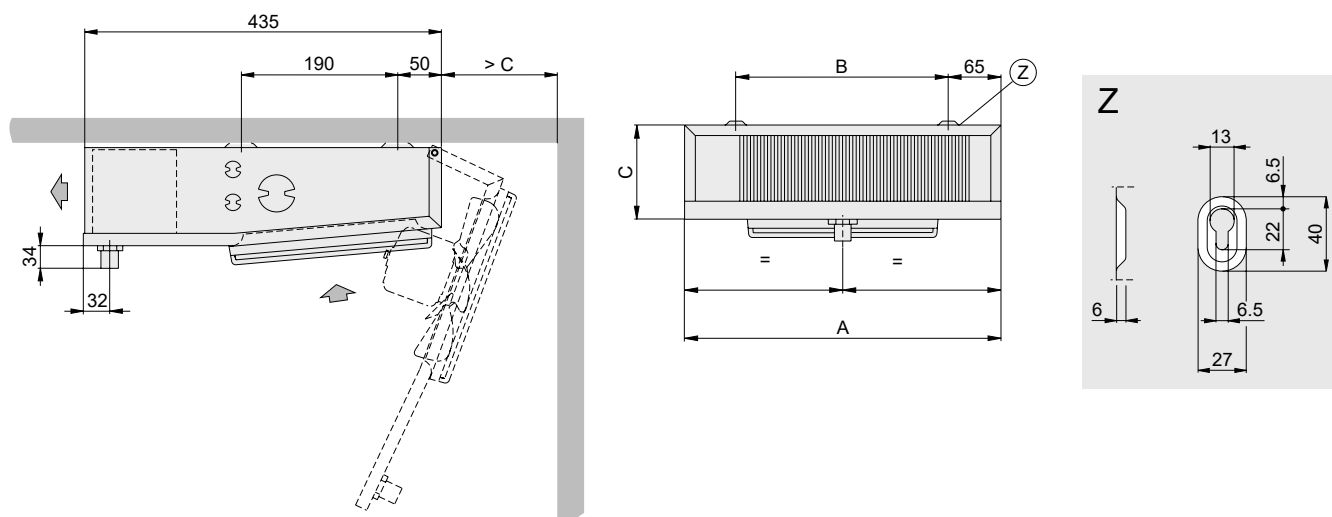
IT ES
EN FR
DE RU



Before removing the packaging, handling, assembling, positioning, commissioning of the machine and before performing any work on the model, download and carefully read all the information in the manual. If in doubt contact Modine.

Construction and dimensional features

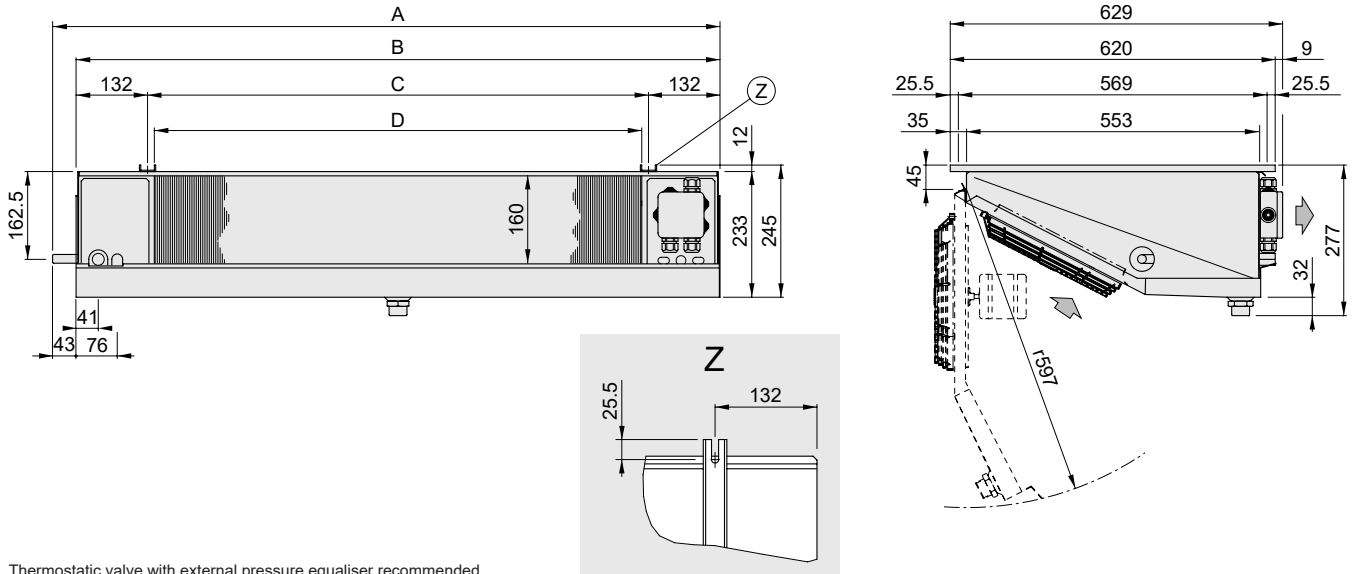
CGS1 - Ø200 fan diameter unit



Model	CGS	11EH3	11AH3	12EH3	12AH3	12LH3	12MH3	13EH3	13AH3	13MH3	14MH3
		11EL4	11AL4	12EL4	12AL4	12LL4	12ML4	13EL4	13AL4	13ML4	14ML4
Motorfans	n° x Ø mm	1x200	1x200	2x200	2x200	2x200	2x200	3x200	3x200	3x200	4x200
Dimensions	A	411	411	611	611	611	861	1111	1111	1111	1461
	B	271	271	471	471	471	721	971	971	971	1321
	C	120	120	120	120	170	170	120	120	170	170
Coil connections	In (mm)	9.52	9.52	9.52	9.52	9.52	9.52	9.52	9.52	9.52	9.52
	Out (mm)	12.7	12.7	12.7	12.7	12.7	12.7	12.7	12.7	12.7	12.7
Drain connection	Ø (GAS)	1/2"	1/2"	1/2"	1/2"	1/2"	1/2"	1/2"	1/2"	1/2"	1/2"
Net weight	kg	4.3	4.9	7.1	7.7	10.7	13.8	11.1	12.1	17.0	23.0

Thermostatic valve with external pressure equaliser recommended

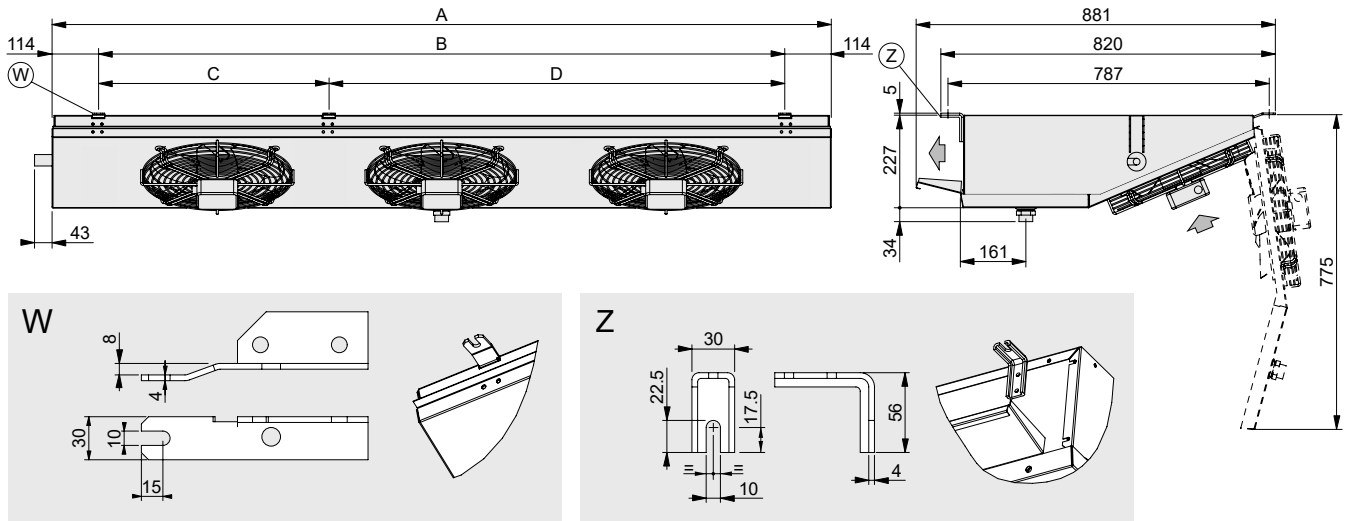
CGS2 - Ø250 fan diameter unit



Thermostatic valve with external pressure equaliser recommended

Model	CGS	21GH4	21EH4	21FL7	22GH4	22EH4	-	22FL7	23GH4	23EH4	23FL7	24GH4	24EH4	24FL7
	21GL7	21EL7	-	22GL7	-	22EL7	-	-	-	23EL7	-	-	24EL7	-
Motorfans	n° x Ø mm	1x250	1x250	1x250	2x250	2x250	2x250	2x250	3x250	3x250	3x250	4x250	4x250	4x250
Dimensions	A	782	782	782	1232	1232	1232	1232	1682	1682	1682	2132	2132	2132
	B	739	739	739	1189	1189	1189	1189	1639	1639	1639	2089	2089	2089
	C	475	475	475	925	925	925	925	1375	1375	1375	1825	1825	1825
	D	451	451	451	901	901	901	901	1351	1351	1351	1801	1801	1801
Coil connections	In (mm)	12.7	12.7	12.7	12.7	12.7	12.7	12.7	12.7	12.7	12.7	12.7	12.7	12.7
	Out (mm)	12.7	12.7	12.7	12.7	12.7	12.7	12.7	12.7	12.7	12.7	12.7	12.7	12.7
Drain connection	Ø (GAS)	1"	1"	1"	1"	1"	1"	1"	1"	1"	1"	1"	1"	1"
Net weight	kg	12	13	13	19	21	21	21	26	28	28	32	35	36

CGS3 - Ø315 fan diameter unit



Model	CGS	31AH4	32AH4	33AH4	34AH4
	31BL7	32BL7	33BL7	34BL7	
Motorfans	n° x Ø mm	1x315	2x315	3x315	4x315
Dimensions	A	810	1360	1910	2460
	B	582	1132	1682	2232
	C	-	-	565	1115
	D	-	-	1117	1117
Coil connections	In (mm)	12.7	12.7	12.7	12.7
	Out (mm)	12.7	12.7	15.87	15.87
Drain connection	Ø (GAS)	1"	1"	1"	1"
Net weight	kg	19	31	48	65

Thermostatic valve with external pressure equaliser recommended

Wiring diagrams

Motor-fan connection diagram

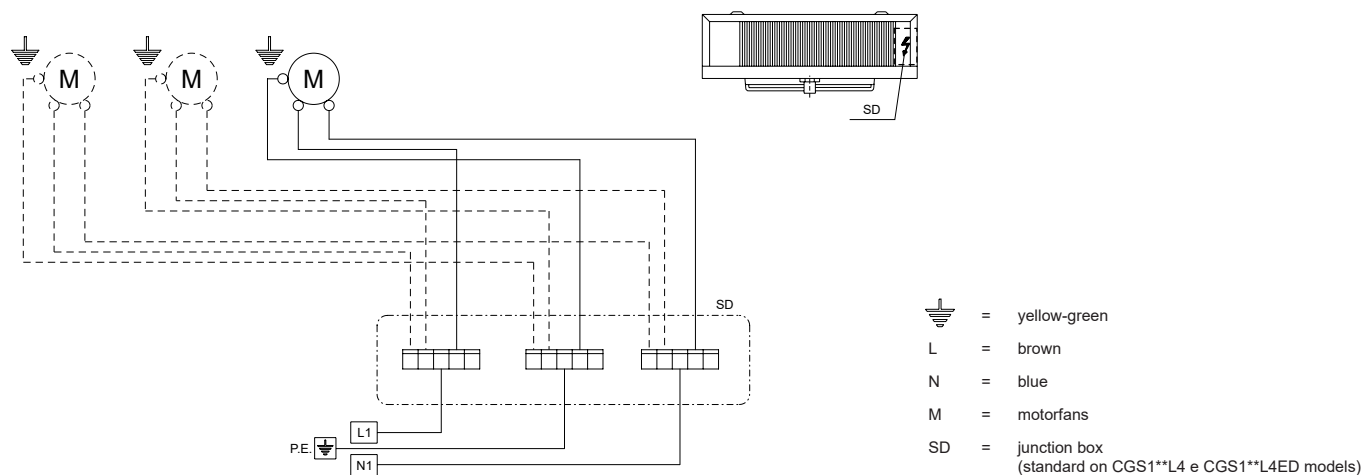
Important. The motors are equipped with inner thermal protection with automatic reconnection. Before using motor speed control systems verify the compatibility with the motors. Non compatible systems may damage motors or increase noise level; Modine will not be responsible for model performance with speed control systems. For fans equipped with thermal contacts (TK), these must be connected to the control circuit. For models supplied with wiring in a junction box, remove the cover to make the connection.

Model	CGS	11EH3	11AH3	12EH3	12AH3	12LH3	12MH3	13EH3	13AH3	-	13MH3	14MH3
		11EL4	11AL4	12EL4	12AL4	12LL4	12ML4	13EL4	13AL4	-	13ML4	14ML4
Motorfans	n° x Ø mm	1x200		2x200				3x200			4x200	
Frequency	Hz	50	60	50	60	50	60	50	60		50	60
Electrical consumption	A	0.35	0.35	0.70	0.70	1.05	1.05	1.05	1.05		1.40	1.40
	W	53	53	106	106	159	159	159	159		212	212
RPM		1300	1300	1300	1300	1300	1300	1300	1300		1300	1300

Model	CGS	21GH4	21FL7	22GH4	22FL7	23GH4	23FL7	24GH4	24FL7
		21GL7	-	22GL7	-	-	-	-	-
Motorfans	n° x Ø mm	1x250		2x250		3x250		4x250	
		Frequency	Hz	50	60	50	60	50	60
Electrical consumption	A	0.64	0.64	1.28	1.28	1.92	1.92	2.56	2.56
	W	83	83	166	166	249	249	332	332
RPM		1350	1500	1350	1500	1350	1500	1350	1500

Model	CGS	31AH4	32AH4	33AH4	34AH4				
		31BL7	32BL7	33BL7	34BL7				
Motorfans	n° x Ø mm	1x315		2x315		3x315		4x315	
Frequency	Hz	50	60	50	60	50	60	50	60
Electrical consumption	A	0.43	0.58	0.86	1.16	1.29	1.74	1.72	2.32
	W	96	130	192	260	288	390	384	520
RPM		1340	1490	1340	1490	1340	1490	1340	1490

CGS1 - Ø200 fan diameter unit



CGS2 - Ø250 fan diameter unit

