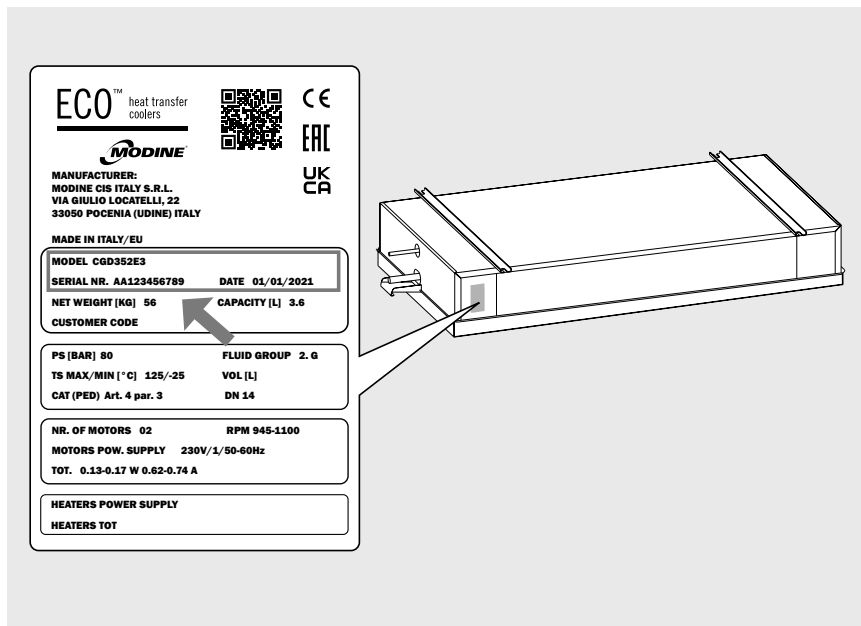


CGD

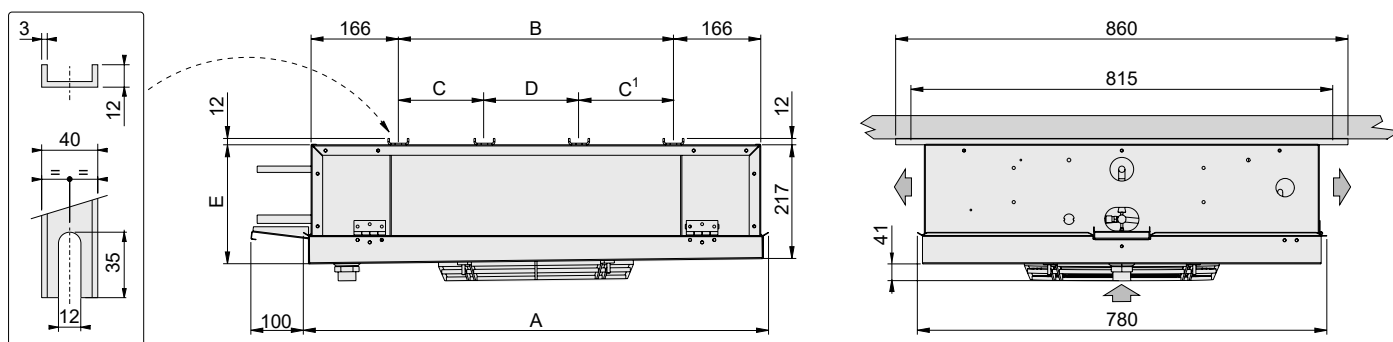
QUICK GUIDE

This document is a concise version of the model manual. This document is not meant to be a replacement of the manual. To download the full manual please scan the QRcode below or locate the data label on the model and scan the QRcode.



Construction and dimensional features

Ø315 fan diameter unit

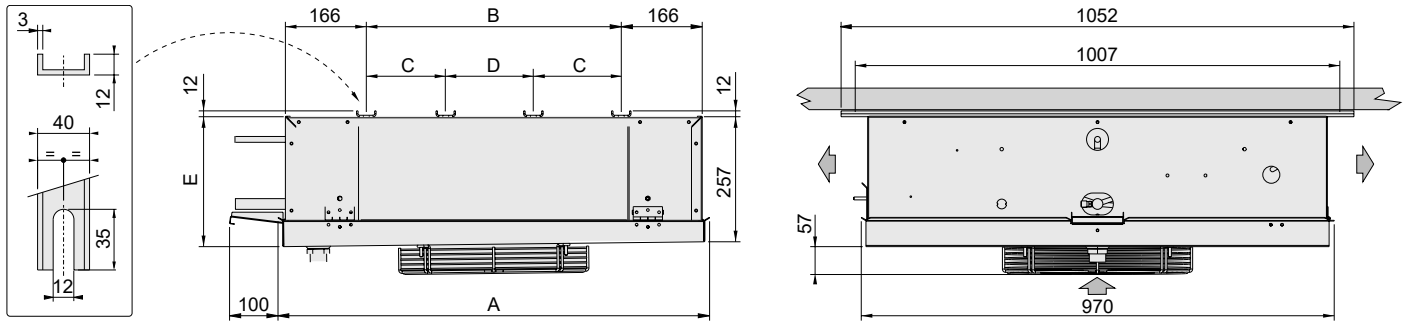


(1) 5-engine models do not have this dimension C

Thermostatic valve with external pressure equaliser recommended

Model	CGD	311E3	312E3	313E3	-	314E3	315E3	-	316E3	-
		311E4	312E4	313E4		314E4		315E4		316E4
		311E7	312E7		313E7	314E7		315E7		316E7
Motorfans	n° x Ø mm	1x315	2x315	3x315	3x315	4x315	5x315	5x315	6x315	6x315
Dimensions	A	885	1435	1985	1985	2535	3085	3085	3635	3635
	B	524	1074	1624	1624	2174	2724	2724	3274	3274
	C	-	-	812	812	1087	1087	1087	1087	1087
	D	-	-	-	-	-	1637	1637	1100	1100
	E	230	235	240	240	245	250	250	255	255
Coil connections	In (mm)	12.7	12.7	12.7	12.7	12.7	12.7	12.7	12.7	12.7
	Out (mm)	12.7	12.7	15.87	12.7	15.87	22.23	15.87	22.23	15.87
Drain connection	Ø (GAS)	1"	1"	1"	1"	1"	1"	1"	1"	1"
Net weight	kg	21	36	53	50	69	82	82	98	98

Ø350 fan diameter unit

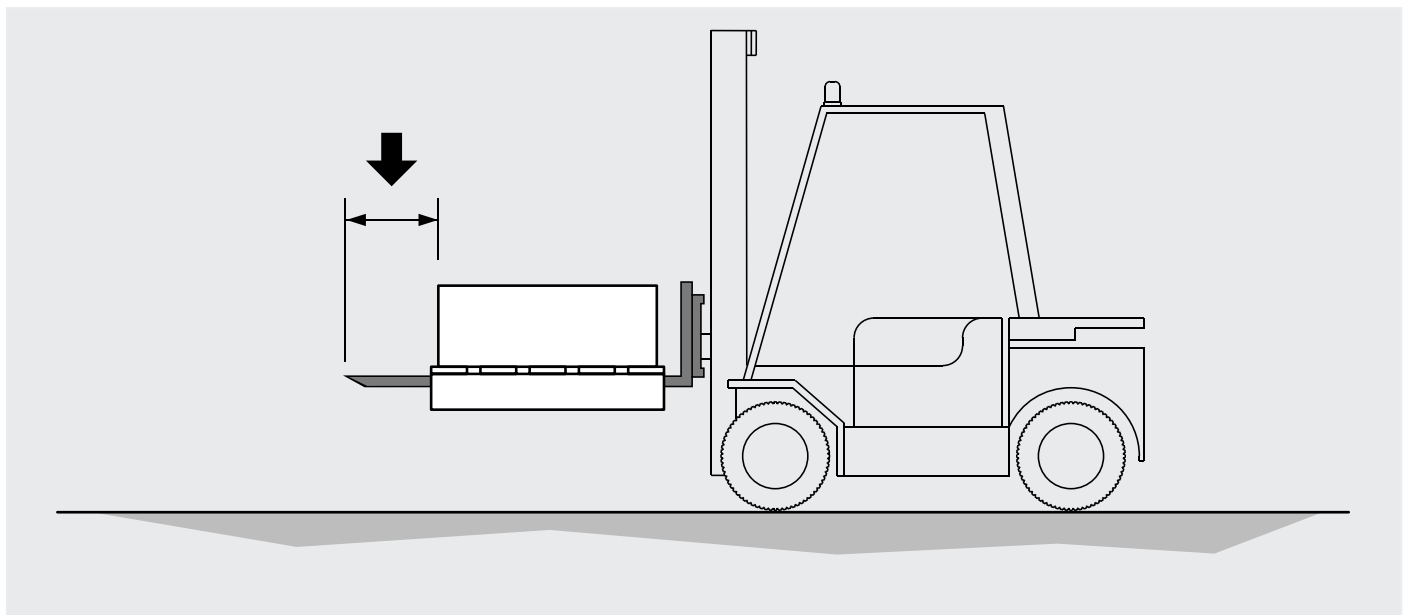


Thermostatic valve with external pressure equaliser recommended

Model	CGD	351E3	361A3	352E3	-	362A3	353E3	363A3	-	354E3	-	364A3	-	355E3	-	365A3
		351E4	361A4	-	352E4	362A4	353E4	-	363A4	-	354E4	-	364A4	-	355E4	365A4
		351E7	361A7	-	352E7	362A7	353E7	-	363A7	-	354E7	-	364A7	-	355E7	365A7
Motorfans	n° x Ø mm	1x350	1x350	2x350	2x350	2x350	3x350	3x350	3x350	4x350	4x350	4x350	4x350	5X350	5X350	5X350
Dimensions	A	885	885	1435	1435	1435	1985	1985	1985	2535	2535	2535	2535	3085	3085	3085
	B	523	523	1073	1073	1073	1623	1623	1623	2173	2173	2173	2173	2723	2723	2723
	C	-	-	-	-	-	522	522	522	1072	1072	1072	1072	1072	1072	1072
	D	-	-	-	-	-	1102	1102	1102	1102	1102	1102	1102	1652	1652	1652
	E	270	270	275	275	275	280	280	280	285	285	285	285	290	290	290
Coil connections	In (mm)	12.7	12.7	12.7	12.7	12.7	12.7	12.7	12.7	12.7	12.7	12.7	15.87	12.7	15.87	12.7
	Out (mm)	12.7	12.7	15.87	12.7	15.87	15.87	22.23	15.87	22.23	15.87	22.23	22.23	22.23	22.23	22.23
Drain connection	Ø (GAS)	1	1	1	1	1	1	1	1	1	1	1	1	1	1	1
Net weight	kg	32	38	56	56	67	80	96	96	104	104	124	124	126	126	150

Handling and installation

- 1.1 The models are supplied in a cardboard box and/or wooden cage.
- 1.2 The packaged model must be moved by qualified personnel using a forklift truck of suitable capacity, or with crane and/or overhead crane. The lifting brackets must be longer than the depth of the packaging and/or of the model. Avoid any abrupt movement and do not stand close to the manoeuvring area. Always ensure that the models are secured to the hoists before handling operations. A heavy impact or a strong thrust can overturn the model.



- 1.3 The model must always be kept in position as indicated on the packaging.
- 1.4 Avoid applying improper pressure to the packaging during handling. Take care not to damage the headers.
- 1.5 Unpack the unit close to the installation site.
- 1.6 Always use PPE (Personal Protection Equipment) during handling and installation, e.g. gloves that are sufficiently resistant to mechanical hazards, to reduce the risk of injury in the event of contact with sharp sheet metal edges or the finned pack.

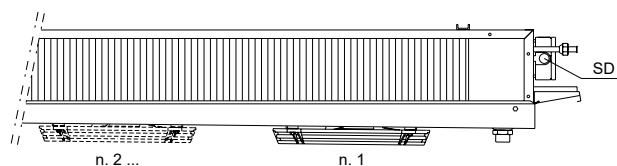
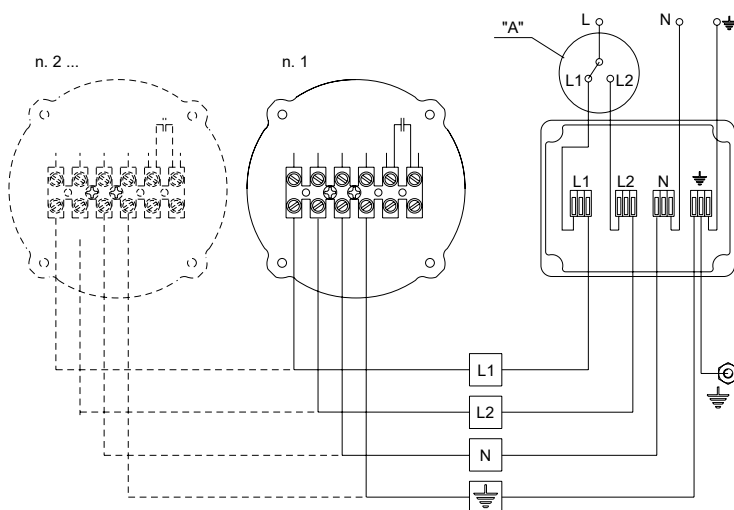
- 1.7 It is essential to take all the necessary measures to ensure the complete safety of the operators in order to prevent the model from accidentally falling against people. It is forbidden to work under a suspended load. It is advisable to prepare a structure of greater capacity than the weight to be supported (trestle or props) on which to place the model.
- 1.8 When installation is complete, remove the protective film covering the model.
- 1.9 When installation is complete, dispose of packaging according to local regulations.
- 1.10 If brackets are provided, install and maintain them for future use.

Wiring diagrams

Motor-fan connection diagram

Important. The motors are equipped with inner thermal protection with automatic reconnection. Before using motor speed control systems verify the compatibility with the motors. Non compatible systems may damage motors or increase noise level; Modine will not be responsible for model performance with speed control systems. For fans equipped with thermal contacts (TK), these must be connected to the control circuit. For models supplied with wiring in a junction box, remove the cover to make the connection.

Ø315 fan diameter unit



NOTE: It is possible to vary the number of revolutions of the motor by applying suitable commutation systems (not supplied). See detail "A".

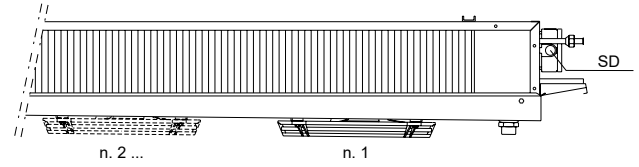
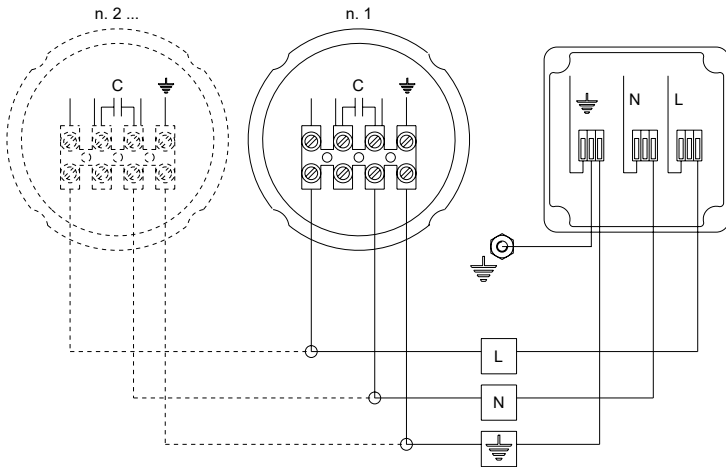
junction box connections	revolving speed
L1 - N	low
L2 - N	high

230V / 1 / 50-60Hz

- = yellow-green
- L1 = black
- L2 = brown
- N = blue o grey
- SD = junction box


Model	CGD	311E3		312E3		313E3		314E3		315E3		316E3	
		311E4	311E7	312E4	312E7	313E4	313E7	314E4	314E7	315E4	315E7	316E4	316E7
Motorfans	n° x Ø mm	1x315		2x315		3x315		4x315		5x315		6x315	
Frequency	Hz	50	60	50	60	50	60	50	60	50	60	50	60
Junction box connections L1 - N													
Electrical consumption	A	0.38	0.45	0.76	0.90	1.14	1.35	1.52	1.80	1.90	2.25	2.28	2.70
	W	85	100	170	200	255	300	340	400	425	500	510	600
RPM		1170	940	1170	940	1170	940	1170	940	1170	940	1170	940
Junction box connections L2 - N													
Electrical consumption	A	0.44	0.62	0.88	1.24	1.32	1.86	1.76	2.48	2.20	3.10	2.64	3.72
	W	100	135	200	270	300	405	400	540	500	675	600	810
RPM		1300	1350	1300	1350	1300	1350	1300	1350	1300	1350	1300	1350

Ø350 fan diameter unit



230-240V / 1 / 50-60Hz

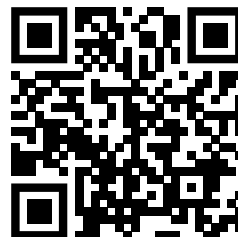
Model	CGD	351E3	361A3	352E3	362A3	353E3	363A3	354E3	364A3	355E3	365A3										
		351E4	361A4	352E4	362A4	353E4	363A4	354E4	364A4	355E4	365A4										
		351E7	361A7	352E7	362A7	353E7	363A7	354E7	364A7	355E7	365A7										
Motorfans	n° x Ø mm	1x350		2x350		3x350		4x350		5x350											
Frequency	Hz	50	60	50	60	50	60	50	60	50	60										
Electrical consumption	A	0.31	0.37	0.68	0.90	0.62	0.74	1.36	1.80	0.93	1.11	2.04	2.70	1.24	1.48	2.72	3.60	1.55	1.85	3.40	4.50
	W	65	85	145	205	130	170	290	410	195	255	435	615	260	340	580	820	325	425	725	1025
RPM		945	1100	1450	1700	945	1100	1450	1700	945	1100	1450	1700	945	1100	1450	1700	945	1100	1450	1700

-  = yellow-green
- L = brown
- N = blue or grey
- SD = junction box



Modine CIS Italy S.r.l.
 33050 Pocenia - Udine - Italy
 Via Giulio Locatelli, 22
 Tel. +39 0432.772.001
 Fax +39 0432.779.594
 www.modine.com

Link to user manuals:



<https://www.modinecoolers.com/documents/>